

**BALANCED PRESSURE
THERMOSTATIC STEAM TRAP
Clean Steam Trap TSS6
(1/2" – 11/2")**

DESCRIPTION

The TSS6 all stainless steel thermostatic steam traps and air vents are specifically designed for use in reactors, sterilizers and distribution lines in clean and pure steam systems. Their small size makes them ideal for use with a wide variety of these equipment.

MAIN FEATURES

- Modulating discharge.
- Wide range of connections options.
- Excellent air discharge.
- Simple and compact design.

STANDARD SURFACE FINISH

- Internal wetted parts: ≤ 0,51micron Ra – SF1.
- External: ≤ 0,76 micron Ra – SF3.
- Other surface conditions see IS PV20.00 E – Technical information.
- Ultrasonic cleaning.

OPTIONS: Special designs under request.
Different standard connection.

USE: Saturated clean steam.

AVAILABLE MODELS: TSS6.

SIZES: 1/2" to 11/2" ; DN 08 to DN 25.

CONNECTIONS: ASME BPE, DIN and ISO.
Clamp ferrules or tube weld ends on request.

PACKAGING: Assembling and packaging in a clean room certified according to ISO 14644-1.
The product is end capped and sealed with recyclable thermo-shrinkable plastic film, to avoid contamination.

INSTALLATION: Vertical installation.

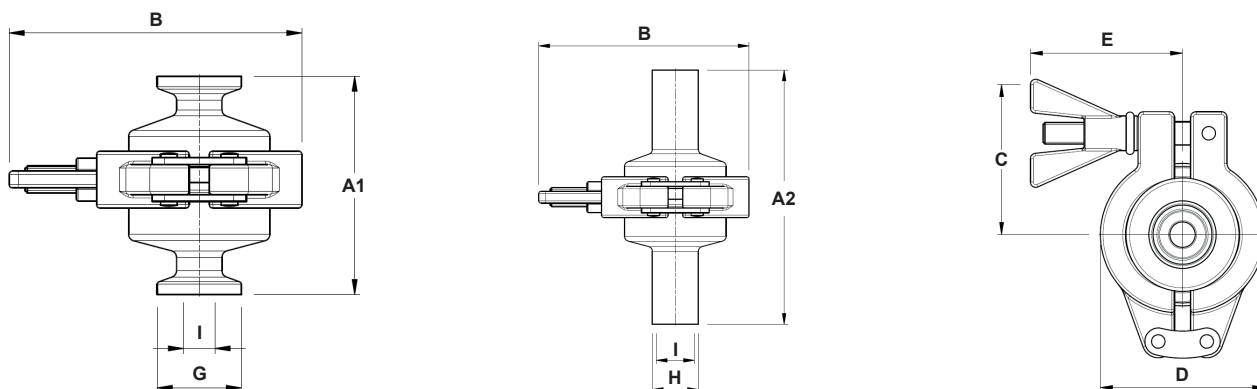


| LIMITING CONDITIONS | |
|-------------------------------------|--------|
| PMA – Maximum allowable pressure | 10 bar |
| TMA – Maximum allowable temperature | 177 °C |
| PMO – Maximum operating pressure | 6 bar |
| TMO – Maximum operating temperature | 165 °C |

| FLOW RATE CAPACITY (kg/h) | | | | | | | | | | |
|---------------------------|---------------|-----------------------------|-----|-----|-----|-----|------|------|------|------|
| MODEL | SIZE | DIFFERENTIAL PRESSURE (bar) | | | | | | | | |
| | | 0,2 | 0,3 | 0,5 | 1 | 1,5 | 2 | 3 | 4 | 6 |
| TSS6 (A) | 1/2" to 11/2" | 320 | 380 | 410 | 550 | 680 | 909 | 1081 | 1199 | 1403 |
| TSS6 (B) | 1/2" to 11/2" | 470 | 495 | 518 | 697 | 792 | 1026 | 1231 | 1436 | 1682 |

A = Condensate discharge at 5 °C below saturation temperature. **B** = Cold water capacity around 20 °C.

DIMENSIONS



DIMENSIONS (mm) ASME BPE

| SIZE | A1 | A2 | B | C | D | E | G * | H | I | WEIGHT (kg) |
|--------|----|----|----|------|----|------|------|-------|-------|-------------|
| 1/2" | 65 | 95 | 87 | 57,5 | 61 | 56,5 | 25 | 12,7 | 9,4 | 0,7 |
| 3/4" | 65 | 95 | 87 | 57,5 | 61 | 56,5 | 25 | 19,05 | 15,75 | 0,7 |
| 1" | 65 | 95 | 87 | 57,5 | 61 | 56,5 | 50,5 | 25,4 | 22,1 | 0,8 |
| 1 1/2" | 65 | NA | 87 | 57,5 | 61 | 56,5 | 50,5 | NA | 34,8 | 0,8 |

DIMENSIONS (mm) DIN

| SIZE | A1 | A2 | B | C | D | E | G * | H | I | WEIGHT (kg) |
|-------|----|----|----|------|----|------|------|----|----|-------------|
| DN 10 | 65 | 95 | 87 | 57,5 | 61 | 56,5 | 34 | 13 | 10 | 0,7 |
| DN 15 | 65 | 95 | 87 | 57,5 | 61 | 56,5 | 34 | 19 | 16 | 0,7 |
| DN 20 | 65 | 95 | 87 | 57,5 | 61 | 56,5 | 34 | 23 | 20 | 0,8 |
| DN 25 | 65 | 95 | 87 | 57,5 | 61 | 56,5 | 50,5 | 29 | 26 | 0,8 |

Clamp ferrules DIN 32676 Series A; Tube weld DIN 11866 Series A (DIN 11850 Series 2).

DIMENSIONS (mm) ISO

| SIZE | A1 | A2 | B | C | D | E | G * | H | I | WEIGHT (kg) |
|-------|----|----|----|------|----|------|------|------|------|-------------|
| DN 08 | 65 | 95 | 87 | 57,5 | 61 | 56,5 | 25 | 13,5 | 10,3 | 0,7 |
| DN 10 | 65 | 95 | 87 | 57,5 | 61 | 56,5 | 25 | 17,2 | 14 | 0,7 |
| DN 15 | 65 | 95 | 87 | 57,5 | 61 | 56,5 | 50,5 | 21,3 | 18,1 | 0,8 |
| DN 20 | 65 | 95 | 87 | 57,5 | 61 | 56,5 | 50,5 | 26,9 | 23,7 | 0,8 |
| DN 25 | 65 | 95 | 87 | 57,5 | 61 | 56,5 | 50,5 | 33,7 | 29,7 | 0,7 |

Clamp ferrules DIN 32676 Series B; Tube weld DIN 11866 Series B (ISO 1127 Series 1).

* Special versions or non-standard sanitary clamp ferrules are available on request.

MATERIALS

| POS. N° | DESIGNATION | MATERIAL |
|---------|--------------|-----------------------------|
| 1 | Body | AISI 316L / 1.4404 |
| 2 | Cover | AISI 316L / 1.4404 |
| 3 | * Thermostat | AISI 316L / 1.4404 |
| 4 | * Gasket | PTFE / TFM® Envelope gasket |
| 5 | Safety clamp | AISI 316 / 1.4401 |

* Available spare parts.

Remarks: FDA / USP Class VI seals certificate on request.

